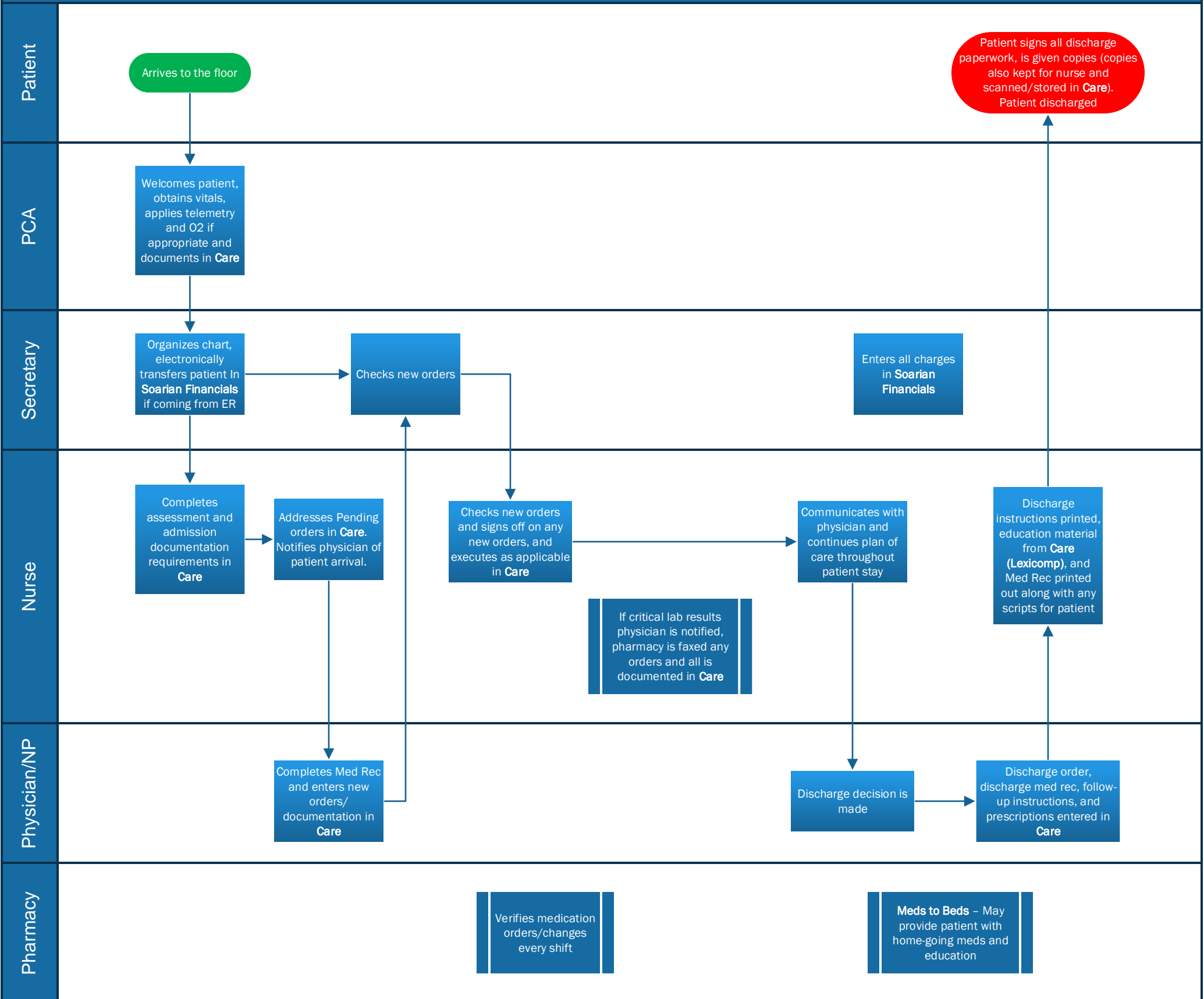
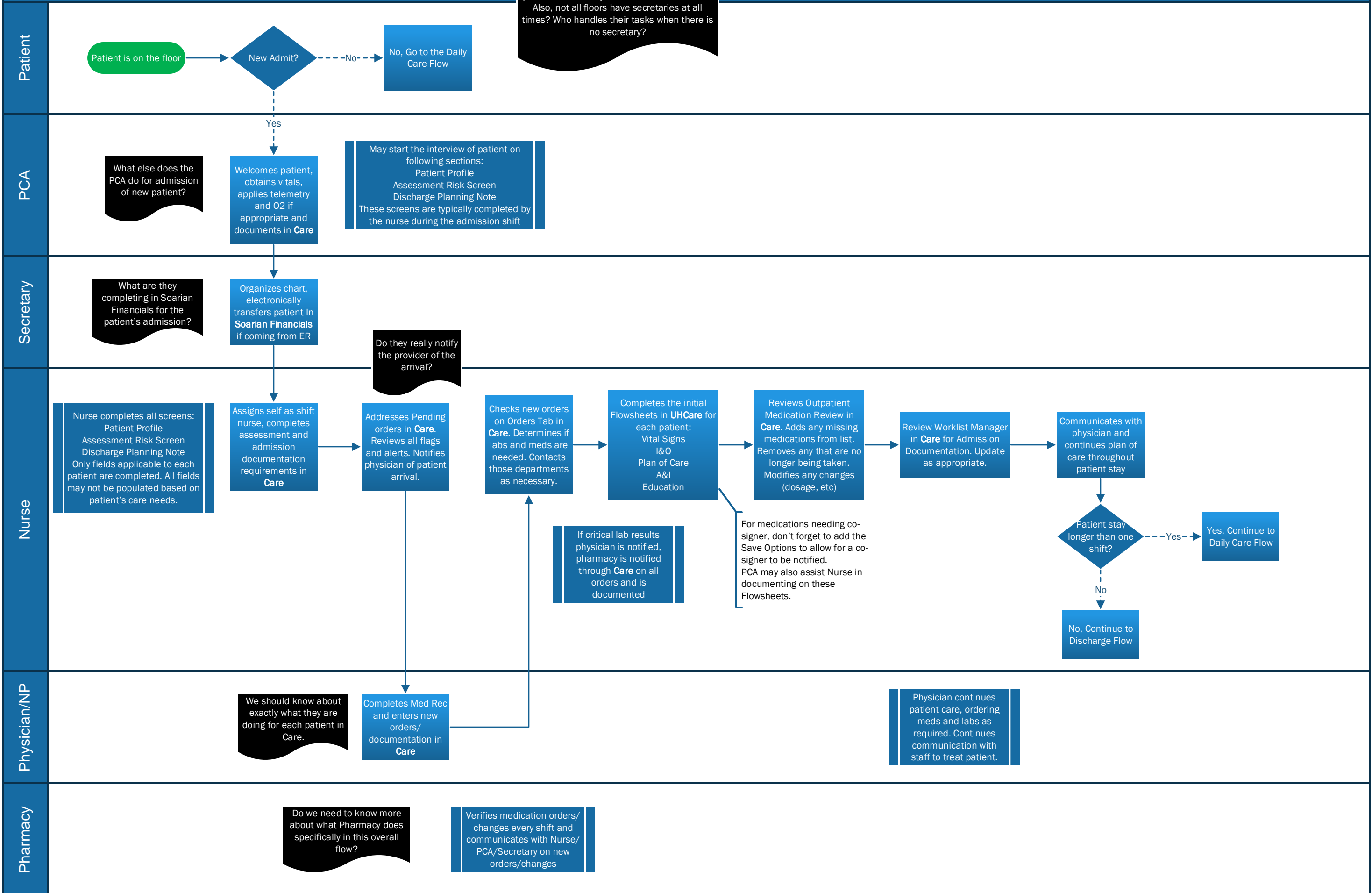


# FS\_Hospital\_Nursing Floor (Med-Surg-Peds)

Authored by \_\_\_\_\_



How did the patient get to the floor? How were they registered into the hospital? Is this all the job of the secretary based on the box below? Also, not all floors have secretaries at all times? Who handles their tasks when there is no secretary?

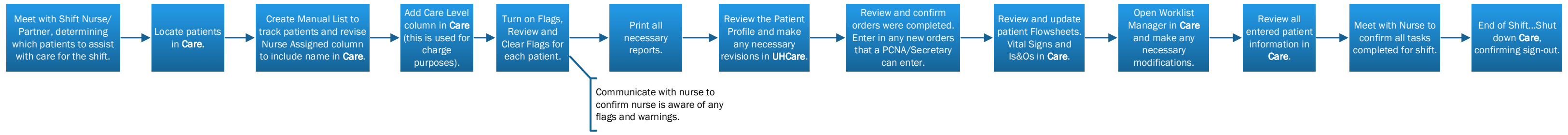


Patient

Patient is on the Floor

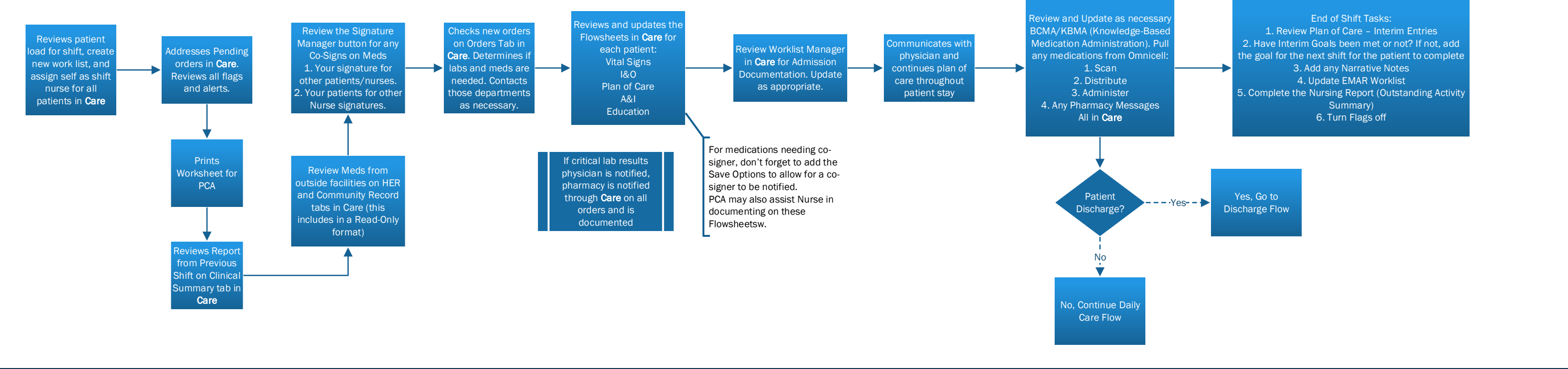
PCA/Secretary

At the start of each shift for patient daily care...  
Note: This swim lane can be completed by a PCA and/or Secretary based on who is available for a specific shift/floor.



Nurse

At the start of each shift for patient daily care...



Physician/NP

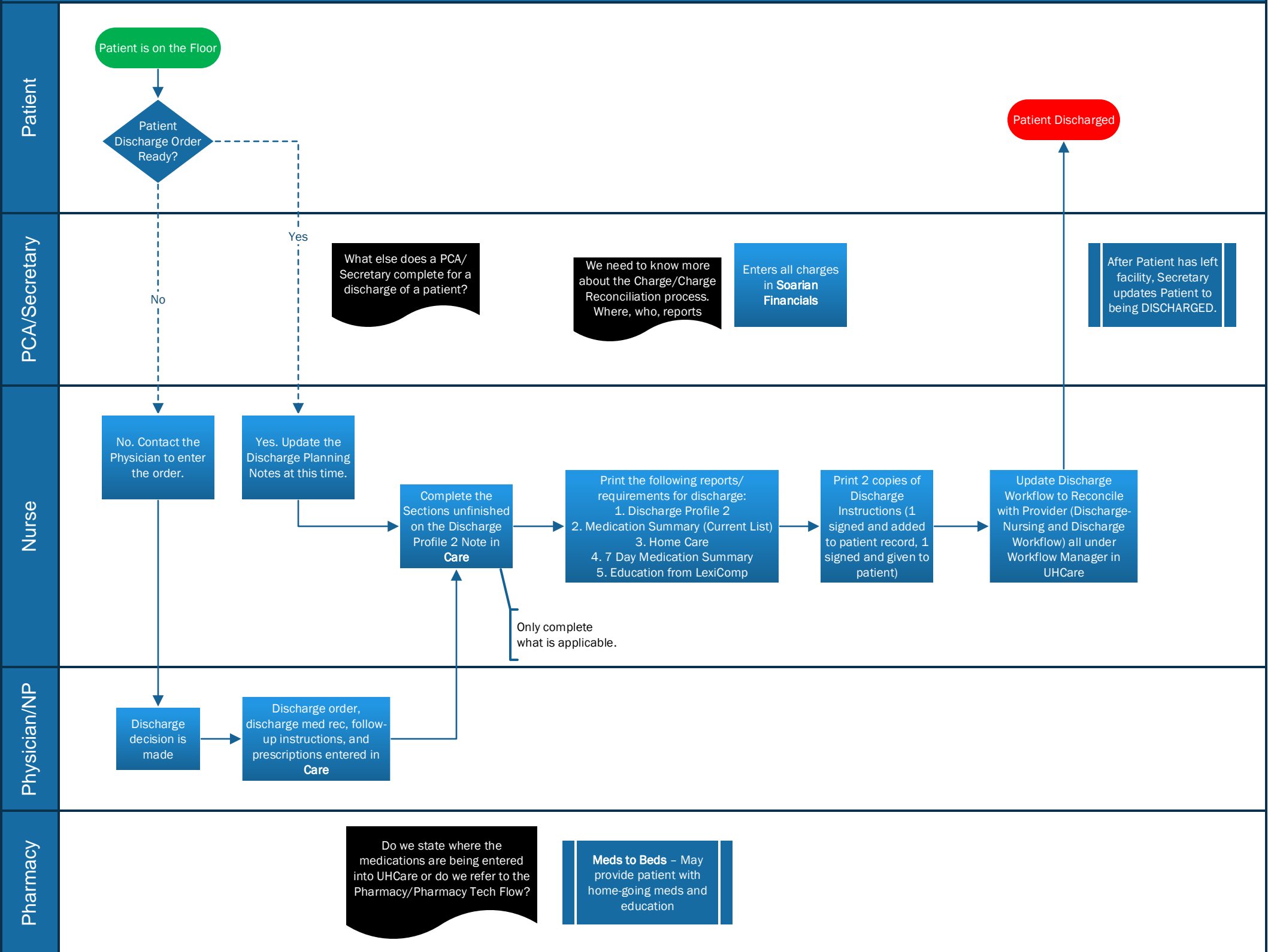
Do we need to know more about what Physician does specifically in this overall flow?

Physician continues patient care, ordering meds and labs as required. Continues communication with staff to treat patient.

Pharmacy

Do we need to know more about what Pharmacy does specifically in this overall flow?

Verifies medication orders/ changes every shift and communicates with Nurse/ PCA/Secretary on new orders/changes



# FS\_Hospital\_Med-Surg

|                  |              |
|------------------|--------------|
| <b>AUTHOR:</b>   | Cathy Hennes |
| <b>APPROVER:</b> |              |

|                       |
|-----------------------|
| <b>REVISION TABLE</b> |
|-----------------------|

| REV | DATE       | DESCRIPTION OF CHANGE  |
|-----|------------|--|
| 0   | 12/18/2018 | New Future State Workflow  |
| 1   | 02/06/2019 | Generic Med Surg based on UH Care course. Change 1-page flow into 3: Admission, Daily Care, and Discharge. |
|     |            |  |
|     |            |  |
|     |            |  |
|     |            |  |